

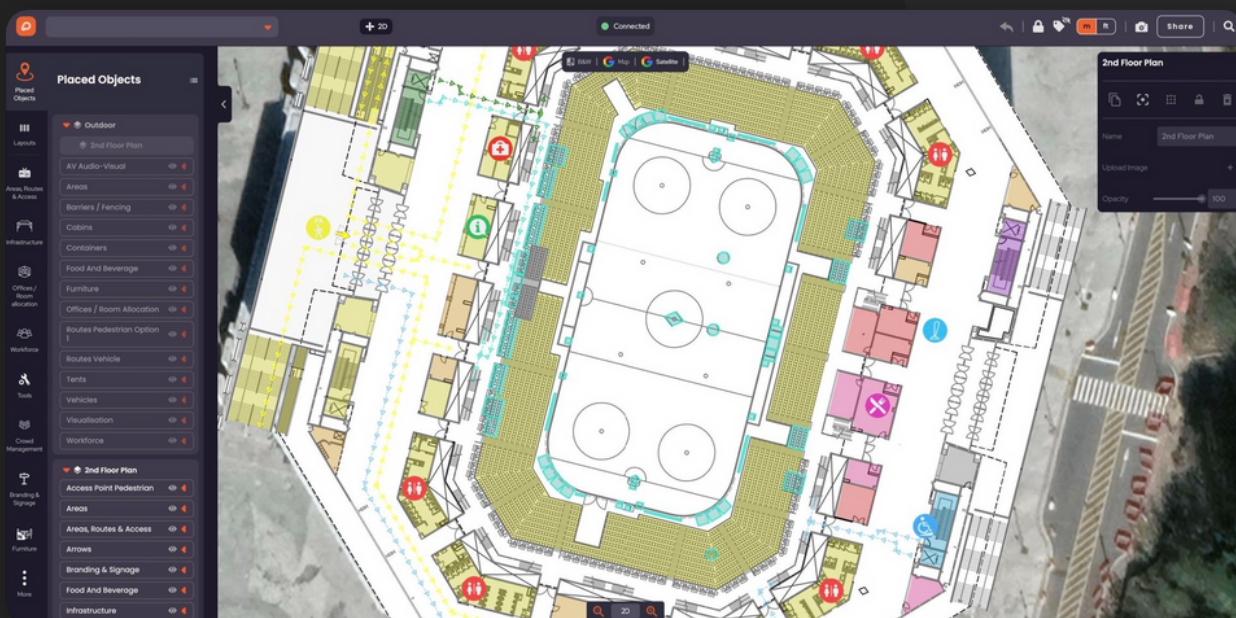


Using CAD in OnePlan for venue
and event management



Venue and event management has undergone a transformation over the last four years. Gone are the days when venue planners would only use tools like PowerPoint to draw their site maps or colored stickers to plan their workforce. The industry is now filled with a plethora of specialist tools and software that venue planners use alongside legacy tools to improve efficiency and collaboration.

Despite this change, simple tasks like using CAD to map your event site can still be time-consuming and expensive. It can quickly become difficult to find a tool or software that suits all your CAD requirements or one that is simple and quick to use. Venue planners also end up switching between one tool to create the CAD drawing and multiple others to plan an event using the CAD file. The constant back and forth is challenging and hinders smooth collaboration.



How does OnePlan simplify the planning process?

OnePlan brings all the moving parts of event planning into one place. Venue planners and event organizers can visually plan events and manage their venues with pinpoint accuracy, collaborate with teams in real time and finally establish a single source of truth for all stakeholders.

Our software has been used to plan over 25,000 events in more than 100 countries for music festivals, road events and sports organizations like the Formula 1 Silverstone Grand Prix and World Triathlon.

Let's take a closer look at one of the ways OnePlan makes venue planning easier with a signature feature - [importing existing CAD files into your event plan.](#)

Contents

Using CAD in OnePlan	4
What can you do with your CAD file in OnePlan	5
Your CAD file in OnePlan	6
Show your event plan in 2D and 3D	8
Venue Twin Features	9
Tour of Britain: Planning with OnePlan and CAD	10
Coventry Moves: OnePlan and Traffic Management	11
Conclusion	12

Using CAD in OnePlan

We know using CAD to map your event site can be tricky for venue planners or event organizers. It typically requires a high level of technical expertise and is often expensive. Popular CAD software like AutoCAD or SolidWorks can cost between \$2,000 - \$4,000 and this doesn't account for the time and cost of learning how to use them. This is why event teams either only have one in-house CAD expert or outsource their CAD needs.

Whether you have an in-house CAD expert at your disposal or outsource the task to a CAD designer, the multiple revisions, additions, and stakeholder input can create a version control headache – and push your labour costs up.

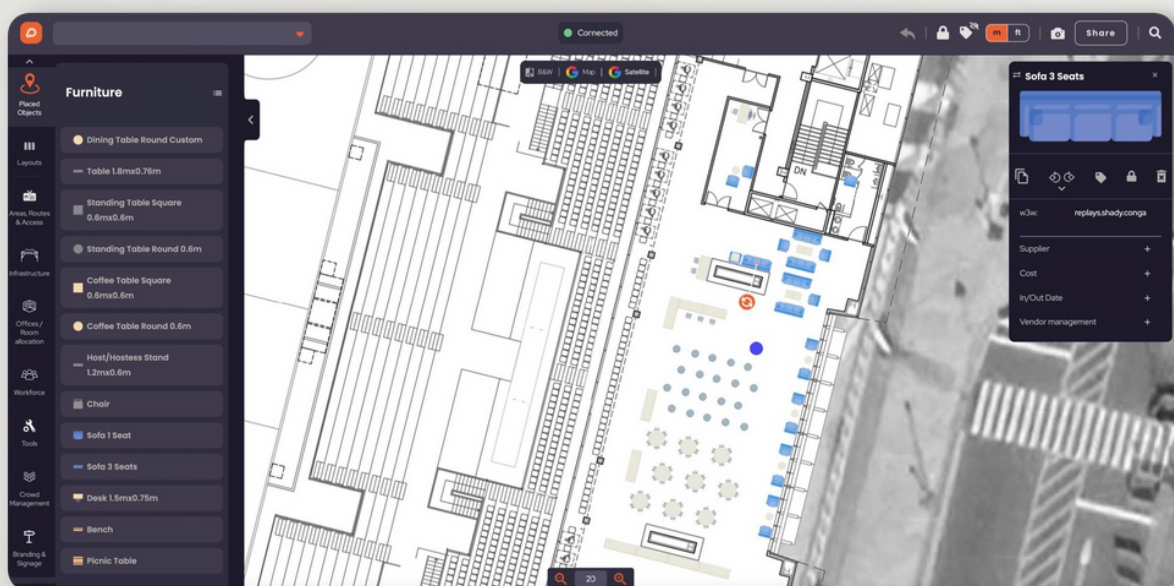
With OnePlan, you can take complete ownership of mapping your event site. All existing CAD drawings can be imported and accurately placed into the OnePlan event studio using GIS mapping.



It's very easy to get started with OnePlan. Just make sure you send the most up-to-date and accurate drawing of your venue. Remove or hide any unnecessary information to ensure you have nice and clean CAD drawings to work with and build your event plan."

Seungjin Ham, Architect and OnePlan Technical Expert

This feature is available on the Professional, Premium, and Enterprise package and is a major advantage for stadiums and venues using OnePlan



What can you do with your CAD file in OnePlan

With OnePlan

Without OnePlan



Plan on your CAD file

Use our planning tools to place hundreds of items like furniture and equipment directly on your CAD file.

Make any changes by simply dragging and dropping items directly onto your CAD drawing saving you time and money.

Go back and forth with an external CAD designer or learn how to use CAD software yourself.

Any slight changes must be graphically rendered in your CAD drawing, but this is a time consuming and expensive process.



Version control

Multiple stakeholders can work on the same CAD drawing simultaneously and make changes in real time.

Send your CAD files to multiple stakeholders separately. Different teams will send emails with updates to the drawing making it tough to keep track of the latest version.



Multiple events

Use your existing venue CAD drawing for different event types by placing items to suit yours.

Go from a sports event to a live music show by adding a broadcasting area or a medic area show in an instant.

Create and modify a new CAD drawing whenever you have a different event at the same venue.

This can be time consuming, expensive and inefficient.



Create Layouts

Layouts can be inserted on top of your base layer to help guide or position where to place your event objects.

Examples include previous event setups, alternate phase imagery, land contours, or any image or PDF file with location reference.

Each layer, layout or level is its own separate file with no ability to modify or customize.



Workforce Planning

Plan your workforce directly onto your existing CAD drawing with multiple teams and make changes in real time.

Using GIS data and geospatial technology, you can place the accurate location of team members within your venue.

Every dot is given a unique record in the menu interface, allowing for key operational details and specific notes for the position of each person.

Plan your workforce by placing colored dots onto a printed CAD drawing.

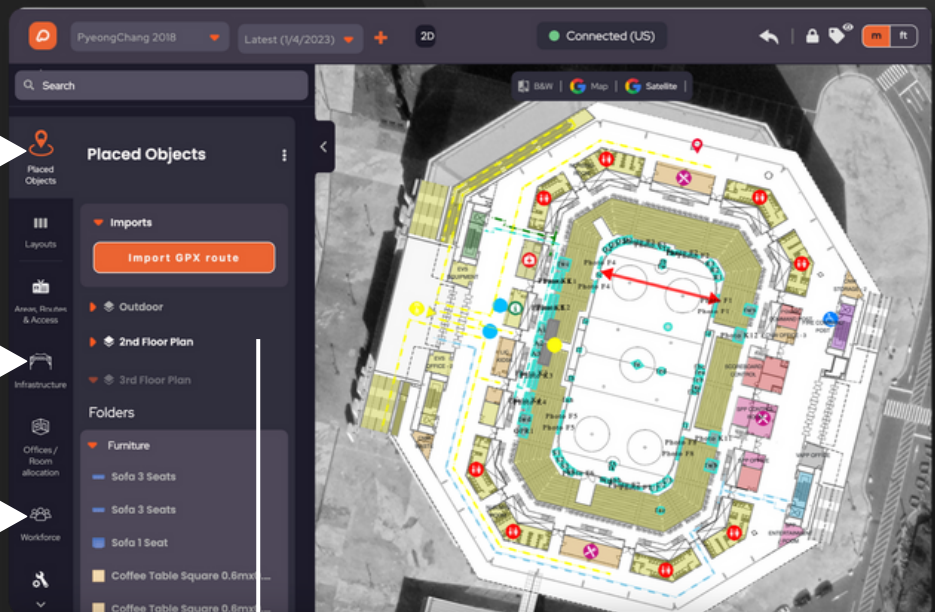
This is a manual process which makes it hard to work across multiple teams and manages changes.

Your CAD file in OnePlan

Place objects like sofa's, dining tables and benches directly on your CAD drawing

Add infrastructure like car parking and camping areas

Plan your workforce



Access, interact and plan independently across different floor levels



To make the CAD import process quick and easy, it is important that the layers, colors, object and elements inside the CAD are labeled, organized and categorized properly.

Javier Sinobas, CAD Specialist

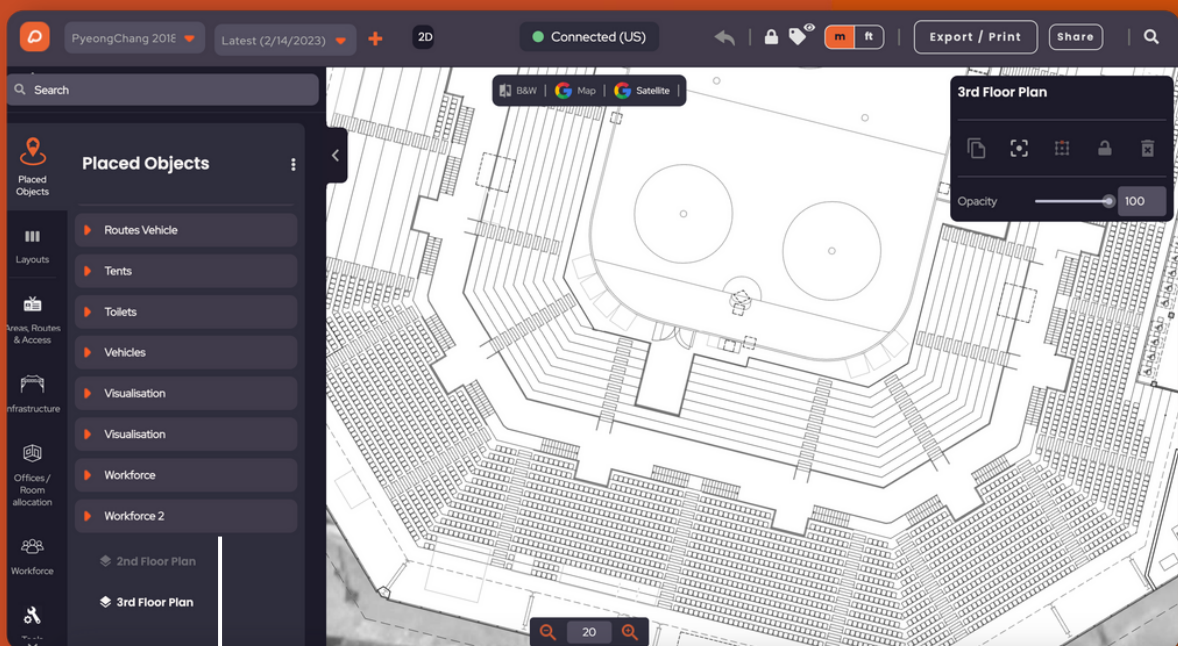


Your CAD file in OnePlan

Use layouts on top of your base layer to position where you place your event object.



You can make your CAD layer transparent and plan on top of the layer and still see the map below clearly.

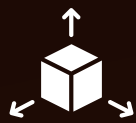


Zoom in to high-resolution CAD files to see the smallest details

Show your event plan in 2D and 3D

Once your event is planned in our OnePlan studio using your CAD file, you can bring it to life with Venue Twin. A fully interactive, centimetre-accurate digital twin of venues, it provides a hyper-realistic visualization of your event plan that you can access anytime anywhere. There is seamless integration between OnePlan and Venue Twin so that every change is instantly shown in both the 2D and 3D views.

Venue Twin has base features to give you complete control of your virtual venue.



Instantly see any item you place in 2D or 3D



Run a customer walkthrough of your venue by flying through your site from any angle drastically reducing the number of site visits needed



Plan for every type of weather by replicating any weather conditions including the time of day



Generate an unlimited amount of content and high-definition images and videos by exporting Venue Twin



[Visit Venue Twin >](#)

Venue Twin Features

Plan, manage and sell your real-world venue



Event Designer

Use this to scenario plan for security, crowd safety, traffic management, workforce training in both internal and external spaces.

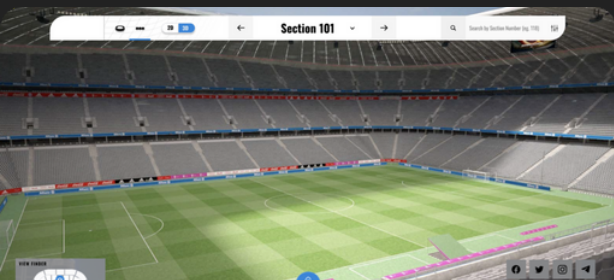
[See More >](#)



Media Manager

Use this for partner branding and advertising, as well as navigational signage around your venue.

[See More >](#)



Seat View

Use this feature to give fans the ultimate view when buying their tickets as they can navigate and switch positions as much as they want.

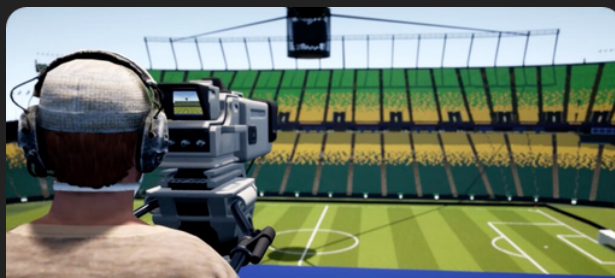
[See More >](#)



Suite View

Use this to design your venue's hospitality and make Venue Twin a sales tool to attract brand sponsors, partners and individual buyers.

[See More >](#)



Camera Manager

Use this to upload camera make and model information, define TV camera views and plan television production.

[See More >](#)

Tour of Britain: Planning with OnePlan and CAD

OnePlan Mapping and Event Planning software made sure that the Tour of Britain was a tour-de-force.

Every year, 120 cyclists across 20 teams, plus countless volunteers, workers and spectators come together for the Tour of Britain, the UK's largest and most prestigious bike event.

The 2022 Tour of Britain event broke away from conventional cycling event mapping and used OnePlan to organize the enormous race, saving hundreds of hours in planning, increasing efficiency and boosting sustainability.

Before using OnePlan, Rob Kennison, Director for the Tour of Britain relied on sketches to designate staging area layouts before scanning and outsourcing them to CAD professionals.

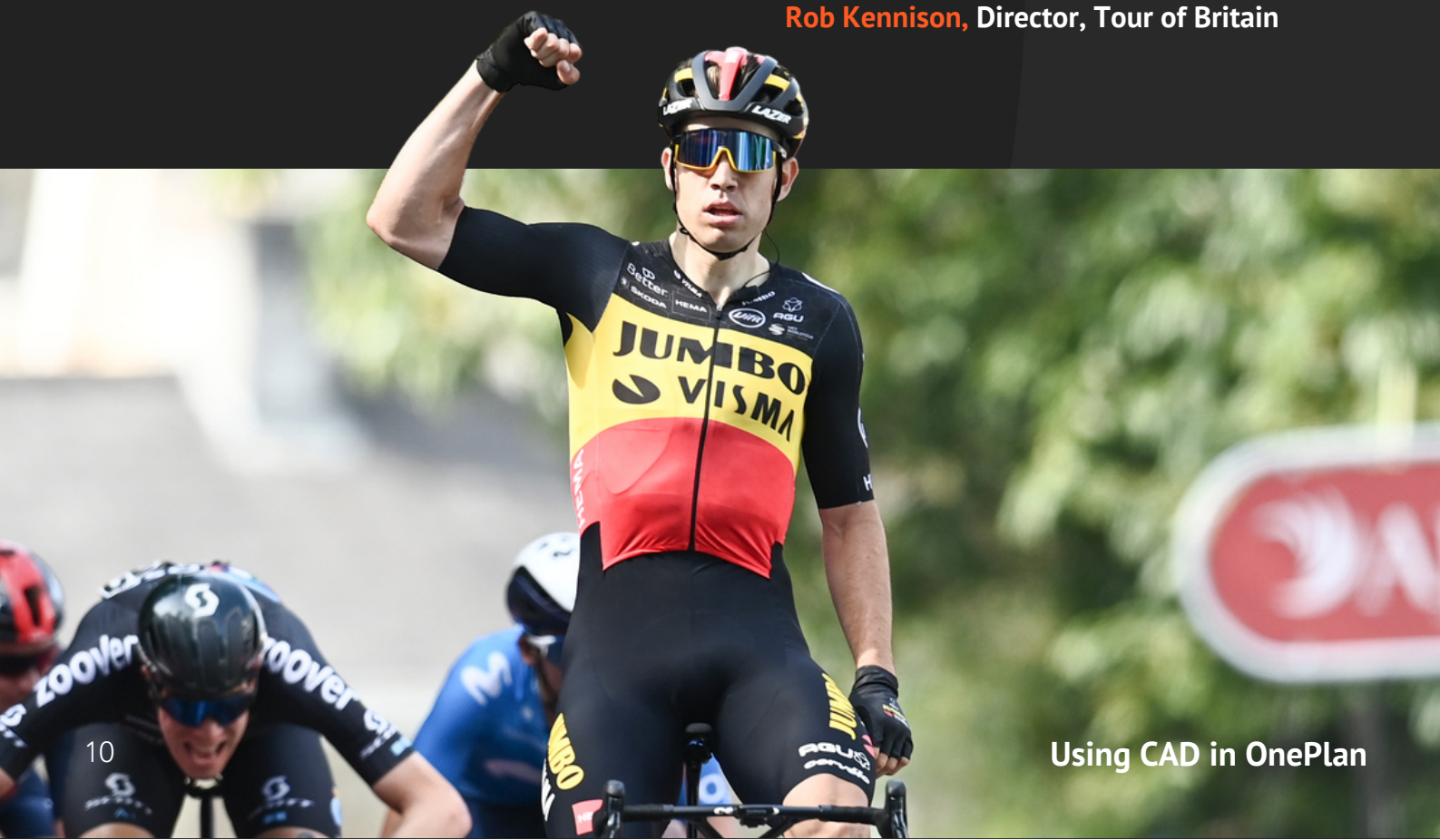
Some of the most significant drawbacks to relying on CAD designs for the Tour of Britain were always:

- Version control
- Standardisation
- Travel time to stage areas

"I'd have to speak to each authority for each venue DWG file of their local mapping, which is available for the whole country. Then I'd get our CAD expert to make a map based on my sketches which involved too much back and forth. It was time-consuming and expensive. Not ideal."

"With OnePlan, I can be on a remote team meeting, share my screen and display an item without having to undergo multiple visits just to measure spaces. I've got the item for the podium, I know what size it is, and I can put it onto the OnePlan map to see if it fits the specs, which is a game changer!"

Rob Kennison, Director, Tour of Britain



Coventry Moves: OnePlan and Traffic Management

Stadium is a security solutions company based out of Coventry in the UK. It services every aspect of safety at an event including event security, crowd management and traffic management.

OnePlan has a long-standing partnership with Stadium to enhance traffic management functionality and implement new tools. The team at Stadium recently used OnePlan for one of their biggest events – Coventry Moves. The day-long event and celebration include music, processions, and other forms of art and performances throughout the city of Coventry.

Stadium previously used more traditional methods of event planning for security management that were complex and difficult to train teams in or onboard stakeholders with. For him, learning OnePlan was intuitive, and it was easy to get his team onboarded too.

“

“I’ve worked with CAD before. While it’s a good system, it was clunky. You needed a lot of training prior to using it, and it’s not designed for traffic management. When I joined Stadium, we used PowerPoint as you can overlay road signs. But to do so, I had to create the sign in PowerPoint, which took around 5-10 minutes per sign. In OnePlan, it’s just a case of click, drag, drop and it automatically brings the sign over. You’re cutting down from 5 minutes per sign to under a minute.”

Sam Wilson, National Operations Manager at Stadium

Using OnePlan, Stadium has saved on costs and time. The team even use it now in their bidding process to generate new clients and projects to grow their business and evolve their services.



Conclusion

By importing your CAD file into OnePlan, you can manage your venue operations with ease. Take it one step further and showcase exactly how the venue will look to all stakeholders from customers to advertisers by creating a 3D rendering of your venue with Venue Twin.

Get started by importing your CAD file into OnePlan.

Contact our team to find out more about the platform or book a demo.

[Book a demo](#)